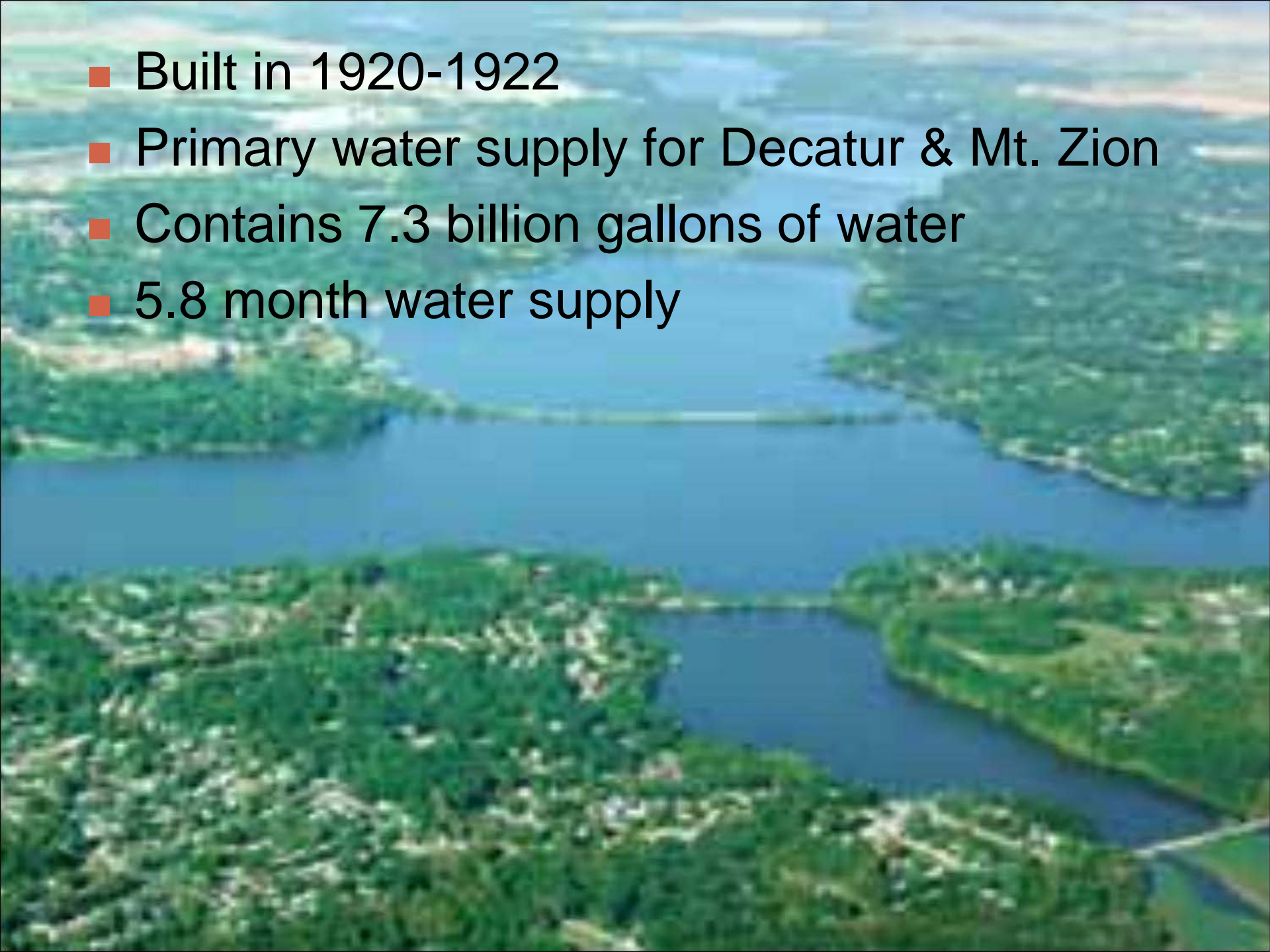
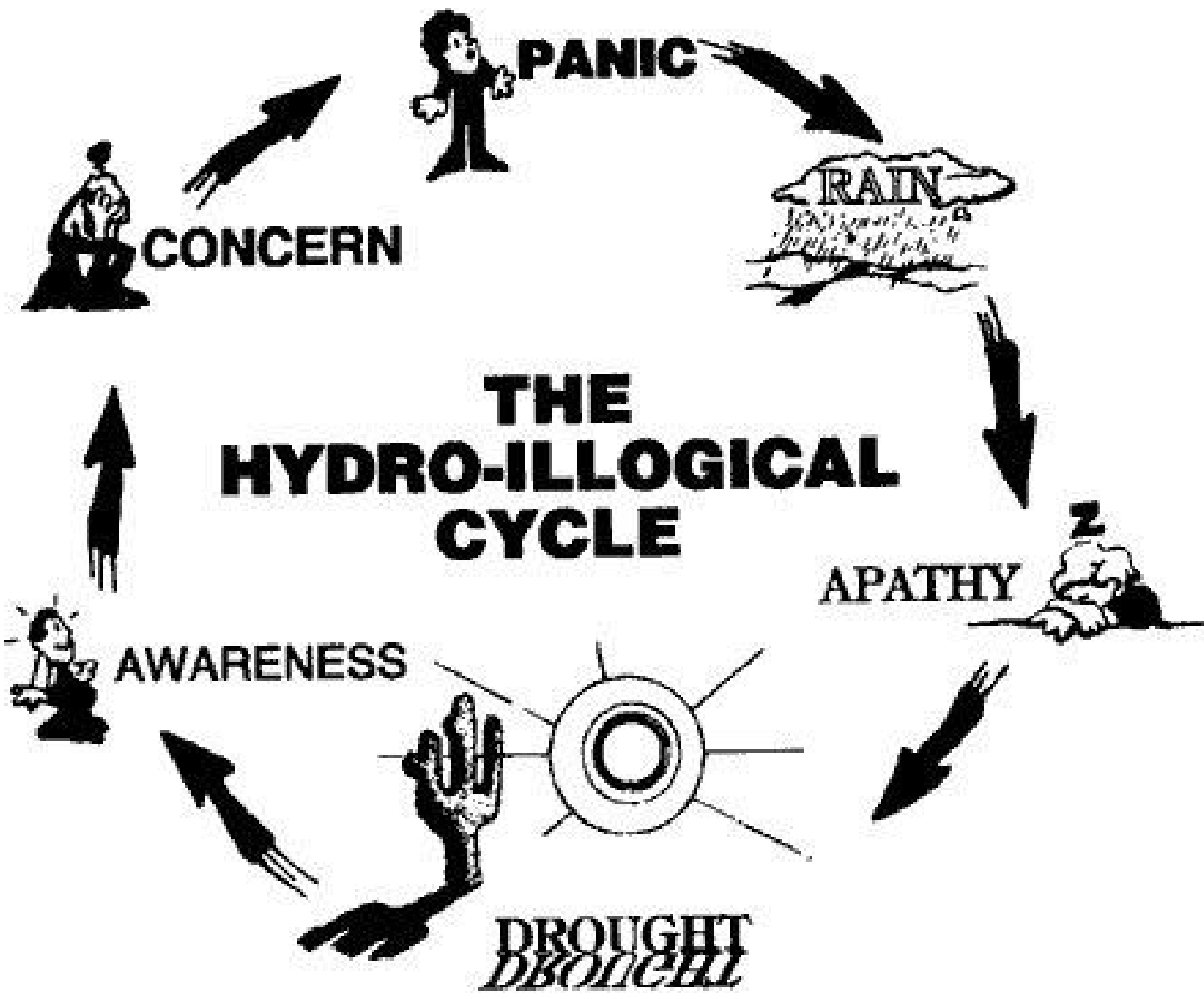

Lake Decatur Dredging Project



Department of Water Management
City of Decatur, Illinois

- Built in 1920-1922
- Primary water supply for Decatur & Mt. Zion
- Contains 7.3 billion gallons of water
- 5.8 month water supply





1953-54 Drought



1988 Drought



2007 Dry Spell



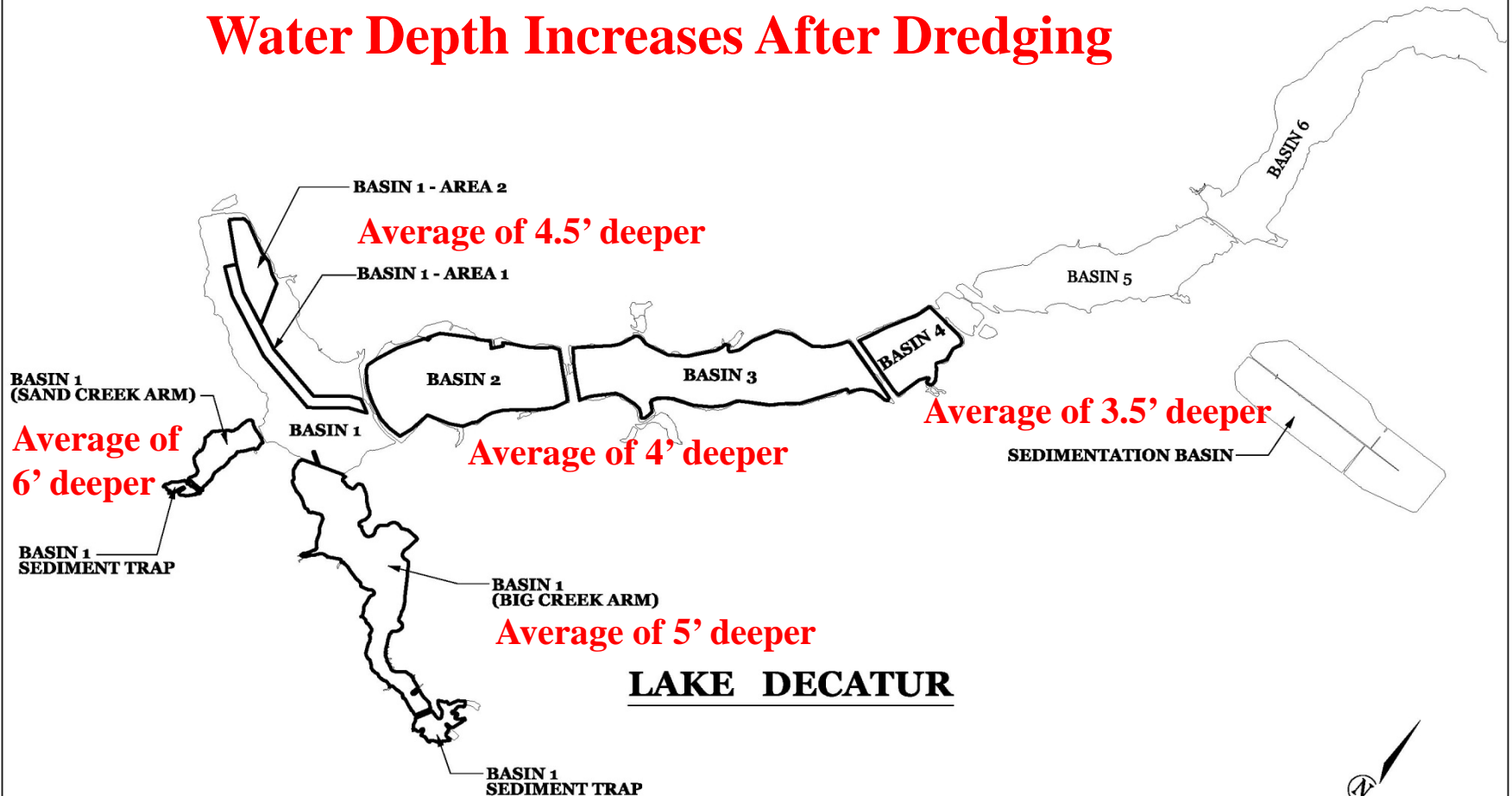
2011 Drought



2012 Drought



Water Depth Increases After Dredging



CHASTAIN & ASSOCIATES LLC
CONSULTING ENGINEERS
DECATUR (217) 422-8544
CHICAGO (773) 714-0050
ROCKFORD (815) 489-0050
184-001397

EXHIBIT 1

Previous Dredging Projects

- Basin 5 (Faries Park Basin)
 - 1993-1995
 - Increased storage capacity by 6% (10 days)
 - \$6.5M project

 - Basin 6
 - 2004-2011
 - Increased storage capacity by 11% (20 days)
 - \$20.8M project
-

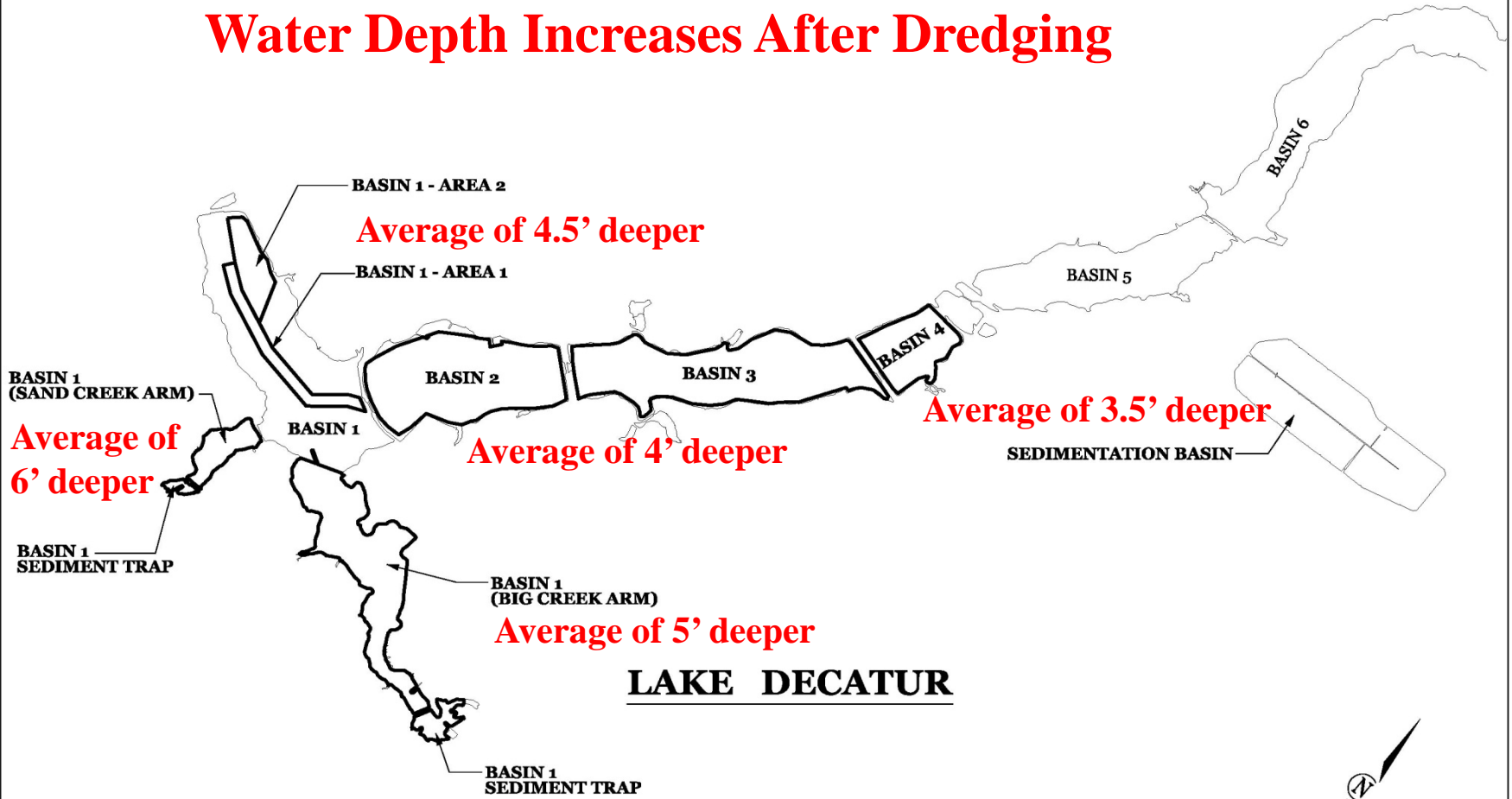
Reliable Water Plan: Lake Decatur Dredging Project

- Dredge Basins 1 through 4
 - Increase lake's storage capacity by 30% (52 days)
 - Create 2 new sediment traps
 - Reuse existing sediment storage site
 - Contractor is Great Lakes Dredge & Dock
 - \$91.2M project over 6 years
-

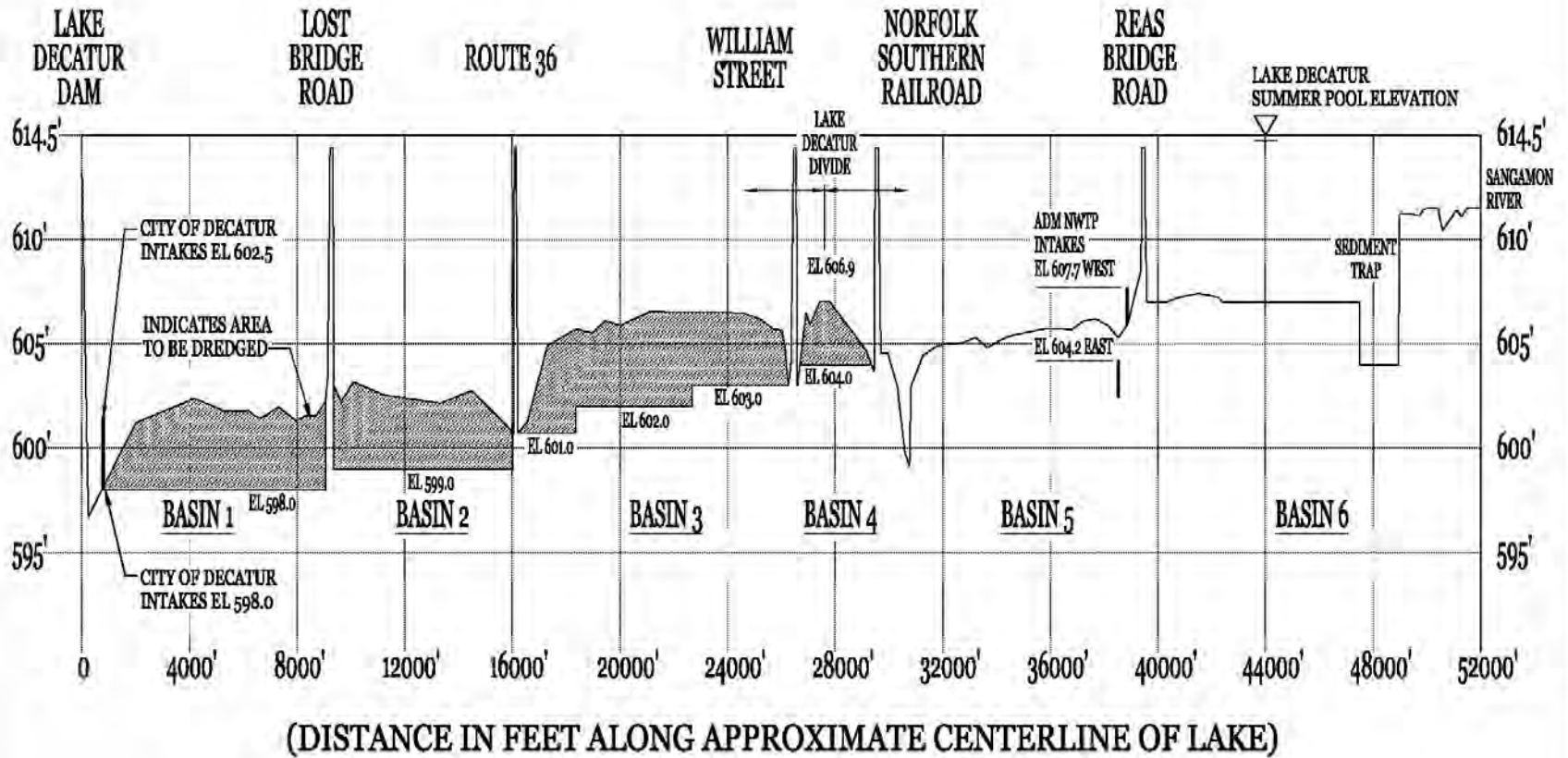
Additional Dredging Benefits

- Improve boating, fishing and swimming opportunities
 - Enhance property values of adjacent land
 - Improve water quality
 - Proactively maintain one of our community's most important assets
 - Proactively enhance our community's economy
-

Water Depth Increases After Dredging



CHASTAIN & ASSOCIATES LLC
CONSULTING ENGINEERS
DECATUR (217) 422-8544
CHICAGO (773) 714-0050
ROCKFORD (815) 489-0050
184-001397



CHASTAIN
& ASSOCIATES LLC
 CONSULTING ENGINEERS

DECATUR (217) 422-9544
 CHICAGO (773) 714-0050
 ROCKFORD (815) 489-0050
 184-001397

EXHIBIT 2



Reliable Water Plan: Lake Decatur Dredging Project

- Dredge Basins 1 through 4
 - Increase lake's storage capacity by 30% (52 days)
 - Create 2 new sediment traps
 - Reuse existing sediment storage site
 - Contractor is Great Lakes Dredge & Dock
 - \$91.2M project over 6 years
-







CAT

3240

JT White

LOWE'S







ISCO



99-BARGE

.COM

WWW.

POS



866 99-BARGE

POSEIDON

1456039

www.poseidon.com
1-800-422-8762
POSEIDON
Storage Corp.
PROUDLY MADE IN THE USA





















The
L.W.

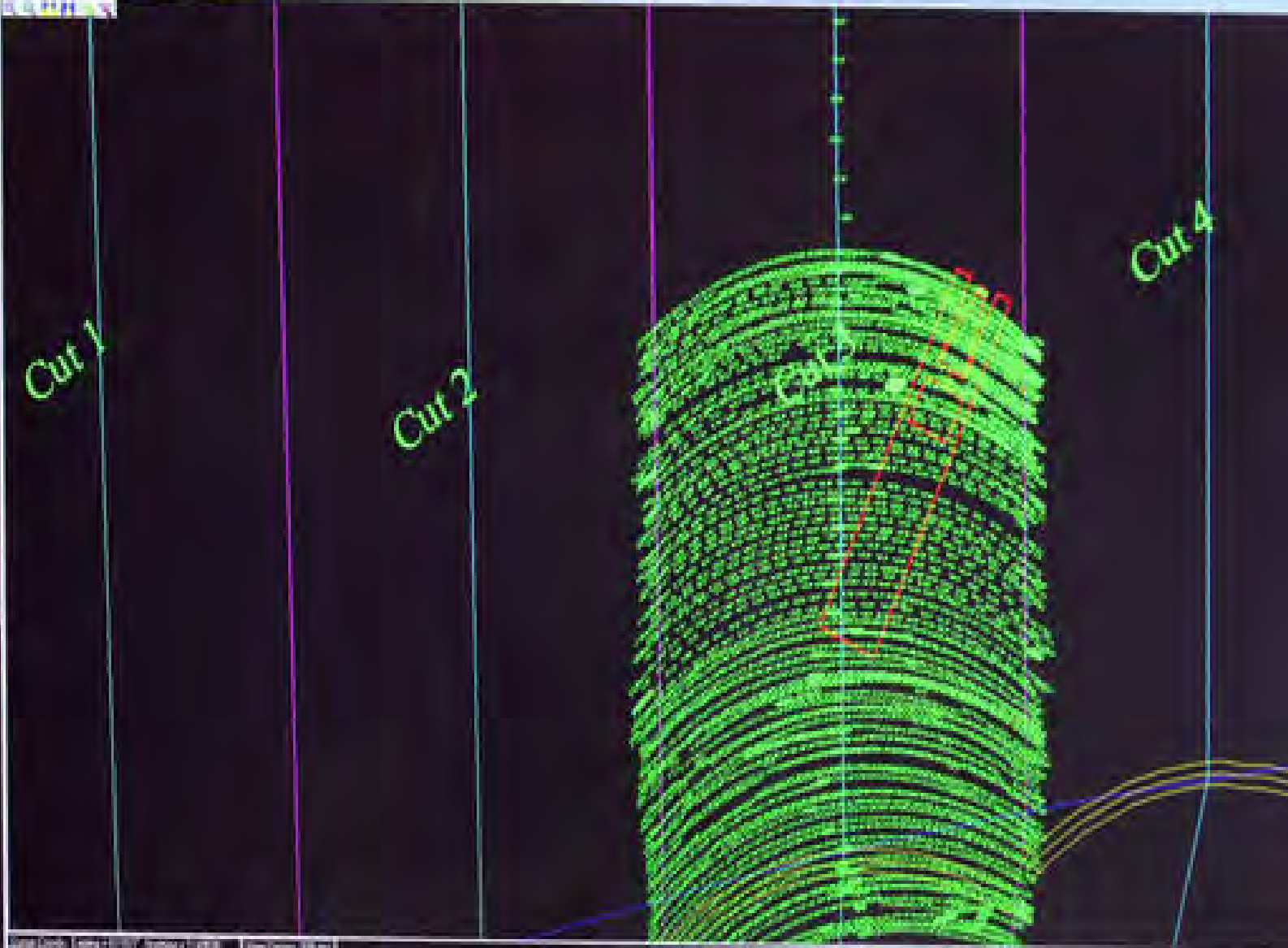


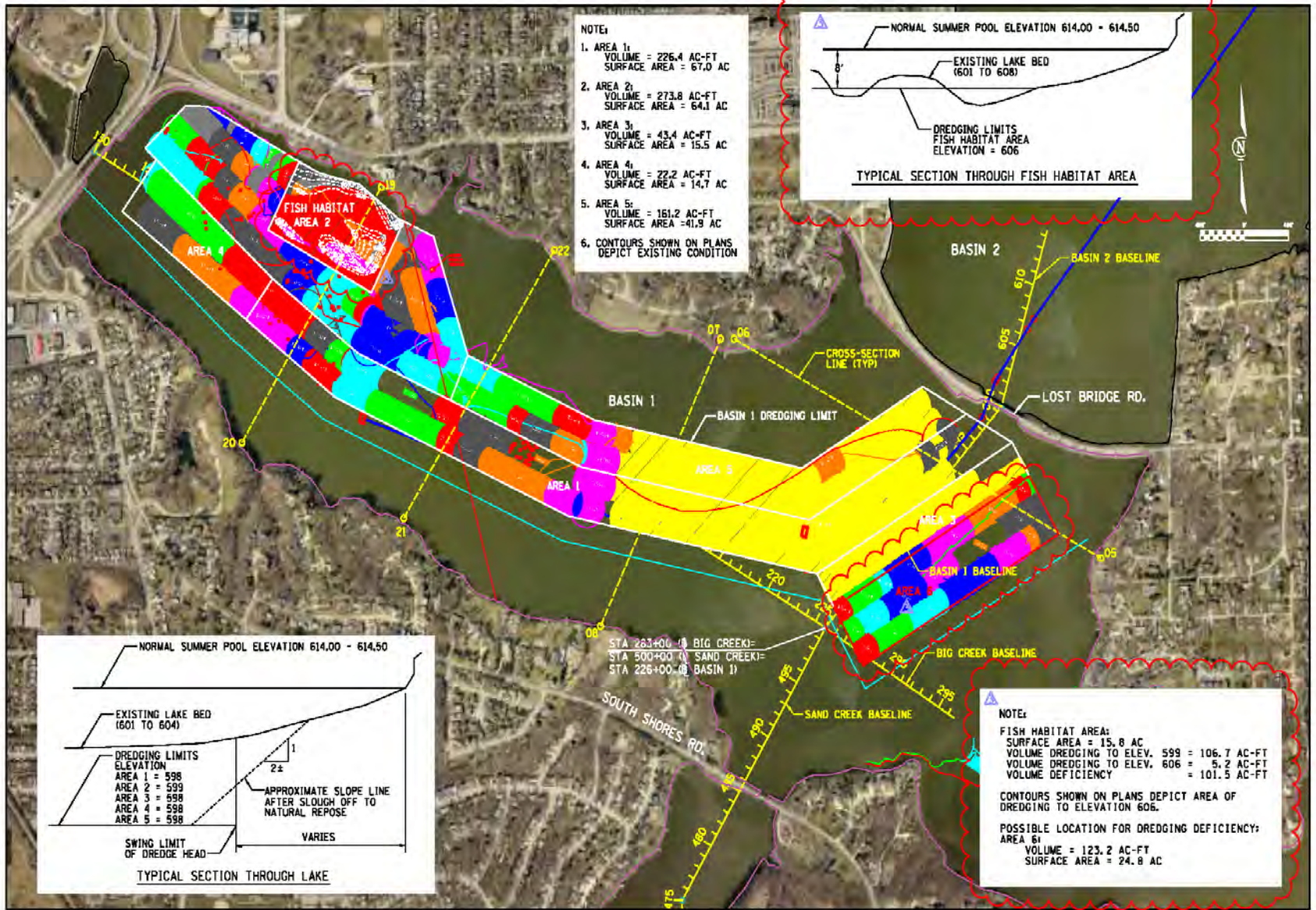
01/01/2006



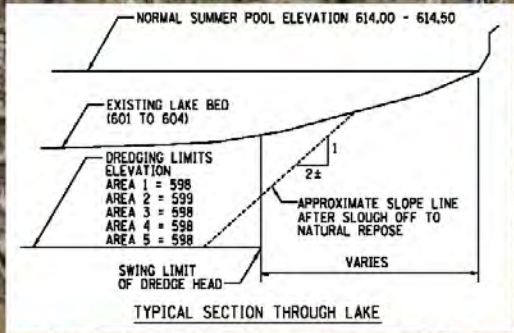
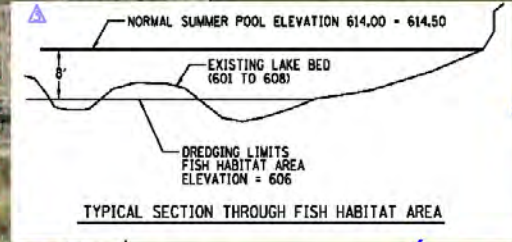


Cutter S. 2364
 Cutter R. **755**
 Heading 333.7
 Spud S. 2512
 Spud R. 681
 Drg Spud S. 2512
 Drg Spud R. 681
 No Tide ---
 Last
 Ladder 13.4 ft
 Cutter CL Sta 2950.2
 GPS Status (locked)
 Hum. Tem.
 HOOP 1.2
 Working L. 10 0004 140
 Working R. 01196.171
 Latitude 39° 49' 28.22533" N
 Longitude 88° 57' 58.1788" W
 Time 10:04
 Date 06/14/2011
 User GJ





- NOTES:
1. AREA 1:
VOLUME = 226.4 AC-FT
SURFACE AREA = 67.0 AC
 2. AREA 2:
VOLUME = 273.8 AC-FT
SURFACE AREA = 64.1 AC
 3. AREA 3:
VOLUME = 43.4 AC-FT
SURFACE AREA = 15.5 AC
 4. AREA 4:
VOLUME = 22.2 AC-FT
SURFACE AREA = 14.7 AC
 5. AREA 5:
VOLUME = 161.2 AC-FT
SURFACE AREA = 41.9 AC
 6. CONTOURS SHOWN ON PLANS
DEPICT EXISTING CONDITION



- NOTE:
- FISH HABITAT AREA:
 SURFACE AREA = 15.8 AC
 VOLUME DREDGING TO ELEV. 599 = 106.7 AC-FT
 VOLUME DREDGING TO ELEV. 606 = 5.2 AC-FT
 VOLUME DEFICIENCY = 101.5 AC-FT
- CONTOURS SHOWN ON PLANS DEPICT AREA OF DREDGING TO ELEVATION 606.
- POSSIBLE LOCATION FOR DREDGING DEFICIENCY:
 AREA 6:
 VOLUME = 123.2 AC-FT
 SURFACE AREA = 24.8 AC

FILE NAME: WFL14

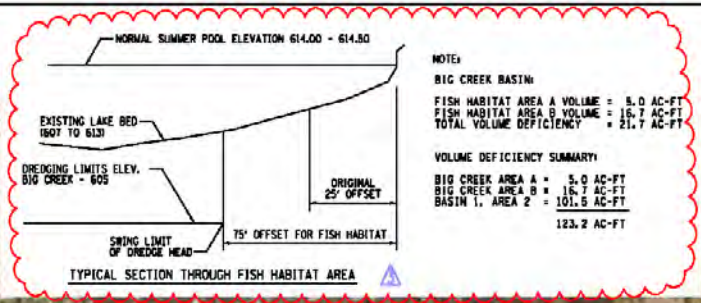
USER NAME: J200H	DESIGNED -	REVISED -	6/3/14
	DRAWN -	REVISED -	10/28/2014
PLLOT SCALE: 1"=200'	CHECKED -	REVISED -	4/29/2015
PLLOT DATE: 1/20/15	DATE -	REVISED -	

CHASTAIN & ASSOCIATES LLC
 200 WEST WASHINGTON, SUITE 200
 CHICAGO, ILLINOIS 60604
 (312) 491-8644
 (773) 734-0000
 (815) 450-0080
 FAX: (312) 491-8997

MUNICIPALITY		CITY OF DECATUR	COUNTY	MACON	TOTAL SHEET NO.	7
SCALE:		SHEET NO. OF SHEETS	STA. TO STA.	BLUESHED AIR PROJECT		

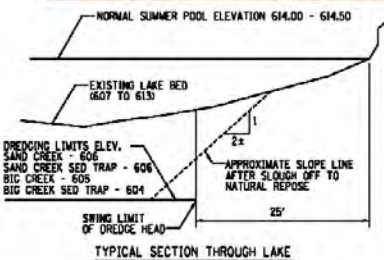
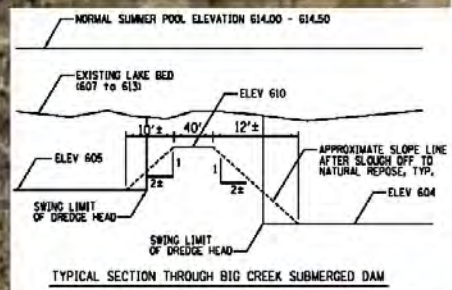
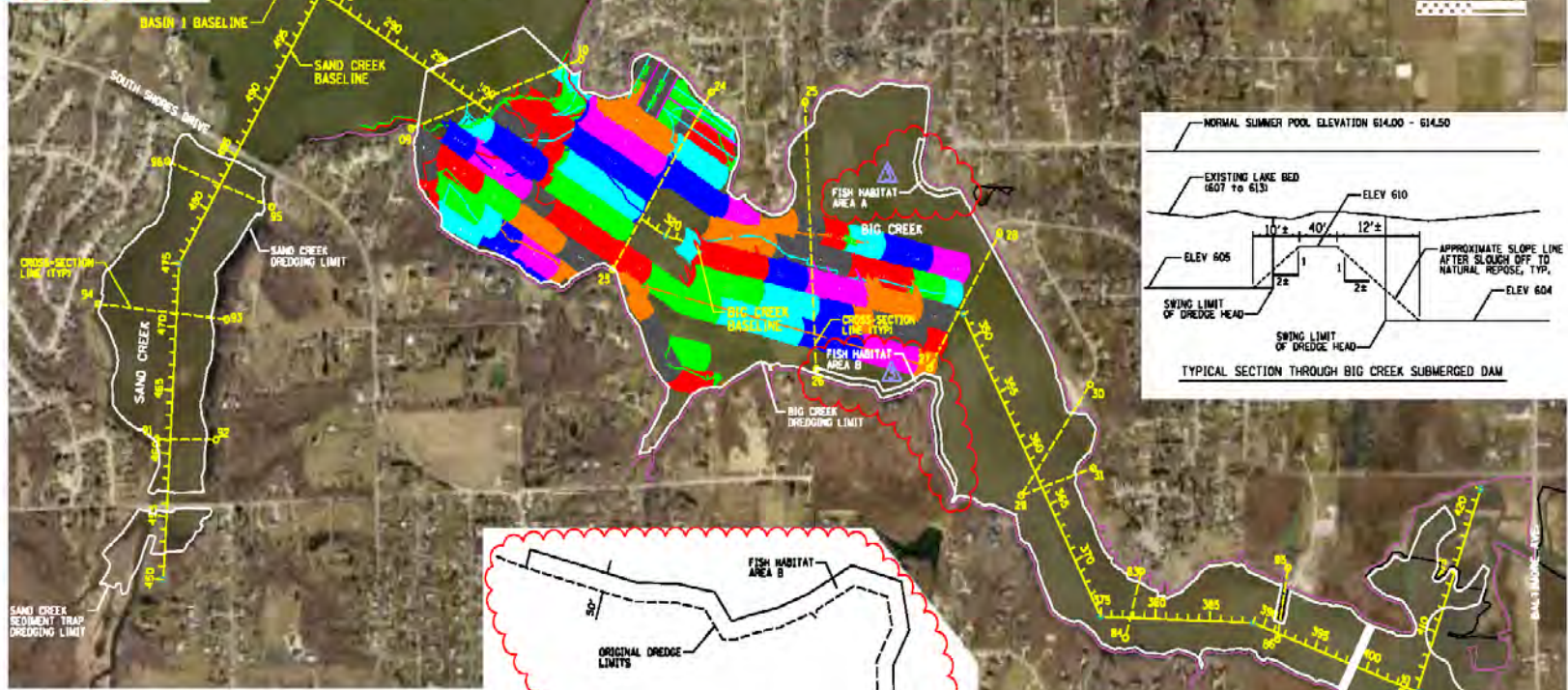
MUNICIPALITY		CITY OF DECATUR	COUNTY	MACON	TOTAL SHEET NO.	7
SCALE:		SHEET NO. OF SHEETS	STA. TO STA.	BLUESHED AIR PROJECT		

BASIN 1 DREDGE PLAN
LAKE DECATUR DREDGING OF BASINS 1-4



NOTE:
BIG CREEK BASIN
FISH HABITAT AREA A VOLUME = 5.0 AC-FT
FISH HABITAT AREA B VOLUME = 16.7 AC-FT
TOTAL VOLUME DEFICIENCY = 21.7 AC-FT

VOLUME DEFICIENCY SUMMARY
BIG CREEK AREA A = 5.0 AC-FT
BIG CREEK AREA B = 16.7 AC-FT
BASIN 1, AREA 2 = 101.5 AC-FT
123.2 AC-FT



- NOTE:
1. SAND CREEK BASIN
VOLUME = 24.5 AC-FT
SURFACE AREA = 90.6 AC
 2. SAND CREEK SEDIMENT TRAP
VOLUME = 41.0 AC-FT
SURFACE AREA = 6.8 AC
 3. BIG CREEK BASIN
VOLUME = 133.5 AC-FT
SURFACE AREA = 299.9 AC
 4. BIG CREEK SEDIMENT TRAP
VOLUME = 118.0 AC-FT
SURFACE AREA = 25.2 AC
 5. CONTOURS SHOWN ON PLANS DEPICT EXISTING CONDITIONS



FILE NAME: W71.E14

USER NAME : J.ZEM	DESIGNED -	REVISED -	6/3/14
	DRAWN -	REVISED -	10/28/2014
PLAT SCALE : 800/11	CHECKED -	REVISED -	4/29/2015
PLAT DATE : 8/2011	DATE -	REVISED -	

CHASTAIN & ASSOCIATES LLC
2025 COLUMBIA UNIVERSITY DRIVE
KNOXFORD, TN 37921

DECATUR OFFICE
KNOXFORD
(917) 499-1644
(773) 734-0000
(618) 450-0080
file: w71.e14

SAND CREEK AND BIG CREEK DREDGE PLAN		MUNICIPALITY	COUNTY	TOTAL SHEET NO.
LAKE DECATUR DREDGING OF BASINS 1-4		CITY OF DECATUR	MADON	30
SCALE:	SHEET NO. OF SHEETS	STA.	TO STA.	ILLINOIS FED. AID PROJECT



01/01/2006



01/01/2006







08/25/2015





08/25/2015



13,200 VOLTS

WARNING
DANGEROUS VOLTAGE
PRESENT BEHIND PANEL



DANGER
HIGH VOLTAGE
KEEP OUT
PELIGRO
ALTO VOLTAJE
MANTENGASE AFUERA

BRADY® #38106 BRADYID.COM Y57205

01/01/2006



WARNING!

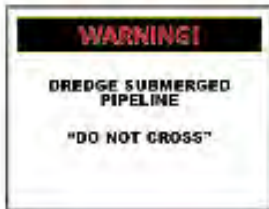


DREDGING OPERATIONS IN PROGRESS

BEGINNING MAY 2014, GREAT LAKES DREDGE & DOCK COMPANY WILL BE DEPLOYING SUBMERGED PIPELINE

- BOATERS ARE URGED TO EXERCISE EXTREME CAUTION WHEN TRANSITTING LAKE DECATUR.
- DREDGE CAN BE CONTACTED ON VHF-FM CH. 13 & CH. 16.
- DREDGING OPERATIONS ARE EXPECTED TO BE COMPLETE BY DECEMBER 2019.
- AVOID ALL BUOYS, DREDGE EQUIPMENT AND PLEASE OBSERVE THE WARNING SIGNS ON THE LAKE.

WATER WARNING SIGNS



DREDGE L. W.

LAKE DECATUR DREDGING OF BASINS 1 – 4.
CITY OF DECATUR, ILLINOIS.
LAKE OFFICE PHONE NUMBER 424-2837
IN CASE OF EMERGENCY PLEASE CALL 911



SUBMERGED PIPELINE MARKED WITH WHITE BUOYS EVERY 1,000 FT.

POWER CABLE MARKED WITH ORANGE BUOYS EVERY 1,000 FT.



08/25/2015



08/25/2015



08/25/2015





08/25/2015





08/25/2015













08/31/2015

How much water is in Lake Decatur?

- The equivalent of 202 Willis Towers!
- After dredging it will be 262 Willis Towers!



QUESTIONS?

